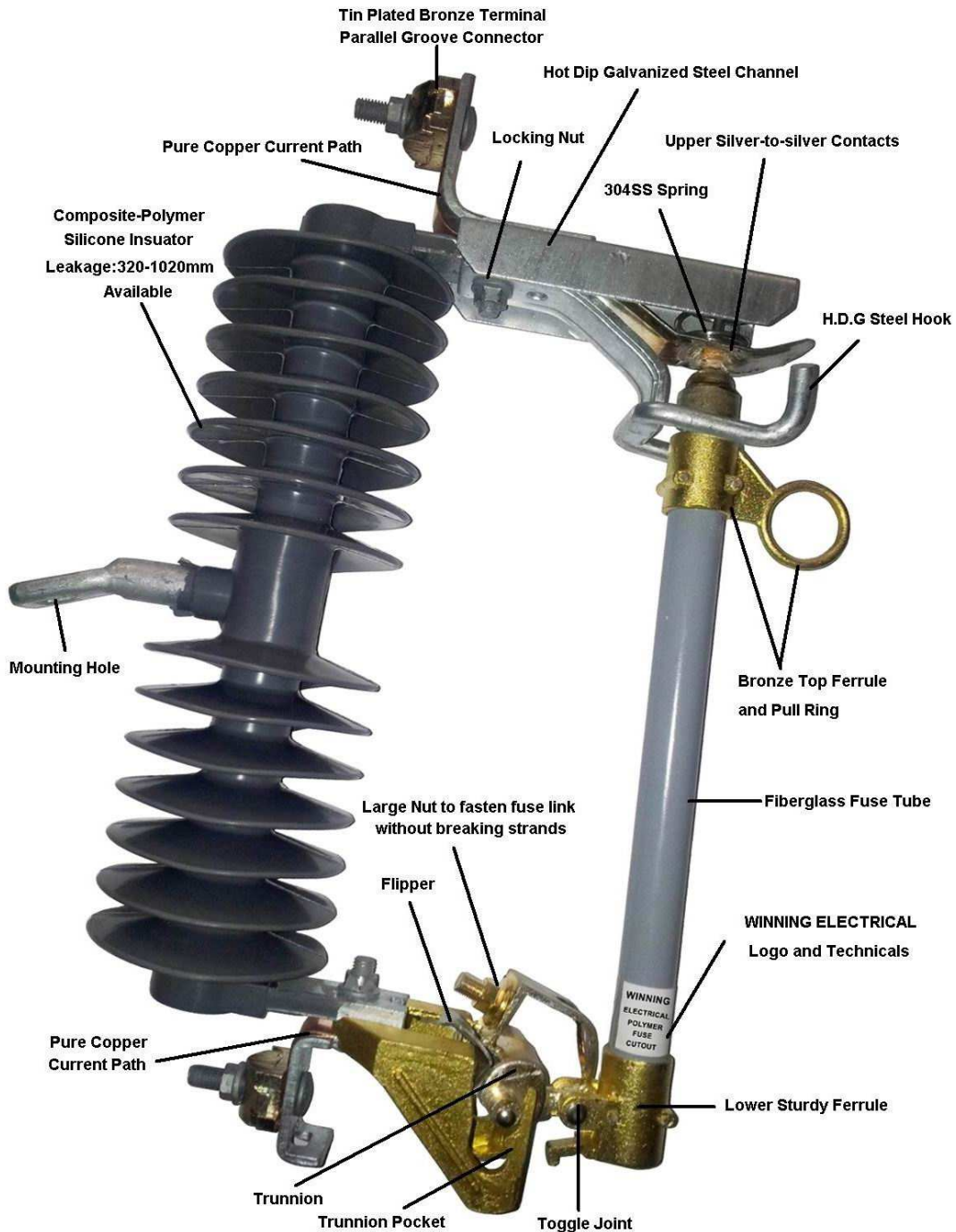




Drop-out Fuse Cutout

Drop-out fuse cutouts are designed to provide protection to the lines of the systems and distribution transformer against overload and short circuit damage, as well as other disconnecting equipments. WINNING® supplies both Porcelain Housed and Polymer Housed (Leakage Distance: 320-1020mm) fuse cutouts up to 36kV.

Illustration of Standard Polymer-Housed Fuse Cutout





Specifications of Polymer Fuse Cutout



10KV-15KV

Type	Rated Voltage (kV)	Rated Current (A)	Breaking Current (A)	BIL (kV)	Power Frequency Withstand Voltage(kV)	Leakage Distance (mm)	Weight (kg)	Packing Dimensions L×W×H (CM)
WSC-5	15	100	8000	110	40	350	3.5	42*35*10
WSC-5	15	200	10000	110	40	350	3.5	



10KV-15KV

Type	Rated Voltage (kV)	Rated Current (A)	Breaking Current (A)	BIL (kV)	Power Frequency Withstand Voltage(kV)	Leakage Distance (mm)	Weight (kg)	Packing Dimensions L×W×H (CM)
WSC-6	15	100	8000	110	40	350	3.8	45*35*12
WSC-6	15	200	10000	110	40	350	3.8	



10KV-15KV

Type	Rated Voltage (kV)	Rated Current (A)	Breaking Current (A)	BIL (kV)	Power Frequency Withstand Voltage(kV)	Leakage Distance (mm)	Weight (kg)	Packing Dimensions L×W×H (CM)
WSC-43	15	100	10000	110	40	380	3.5	39*36*10.5
WSC-43	15	200	12000	110	40	380	3.5	



24KV-27KV

Type	Rated Voltage (kV)	Rated Current (A)	Breaking Current (A)	BIL (kV)	Power Frequency Withstand Voltage(kV)	Leakage Distance (mm)	Weight (kg)	Packing Dimensions L×W×H (CM)
WSC-24A	24	100	6000	150	65	520	4.2	40*36*12
WSC-24A	24	200	8000	150	65	520	4.2	



24KV-27KV

Type	Rated Voltage (kV)	Rated Current (A)	Breaking Current (A)	BIL (kV)	Power Frequency Withstand Voltage(kV)	Leakage Distance (mm)	Weight (kg)	Packing Dimensions L×W×H (CM)
WSC-44	24	100	6000	150	65	620	3.8	40*36*12
WSC-44	24	200	8000	150	65	620	3.8	



27KV-33KV

Type	Rated Voltage (kV)	Rated Current (A)	Breaking Current (A)	BIL (kV)	Power Frequency Withstand Voltage(kV)	Leakage Distance (mm)	Weight (kg)	Packing Dimensions L×W×H (CM)
WSC-45	27	100	6000	170	70	620	7.3	48*35*12
WSC-45	27	200	8000	170	70	620	7.3	



27KV-33KV

Type	Rated Voltage (kV)	Rated Current (A)	Breaking Current (A)	BIL (kV)	Power Frequency Withstand Voltage(kV)	Leakage Distance (mm)	Weight (kg)	Packing Dimensions L×W×H (CM)
WSC-45B	27	100	6000	170	70	620	6.5	48*35*12
WSC-45B	27	200	8000	170	70	620	6.5	



24KV-27KV

Type	Rated Voltage (kV)	Rated Current (A)	Breaking Current (A)	BIL (kV)	Power Frequency Withstand Voltage(kV)	Leakage Distance (mm)	Weight (kg)	Packing Dimensions L×W×H (CM)
WSC-48	24	100	6000	150	65	650	5.8	39*35*11
WSC-48	24	200	8000	150	65	650	5.8	



27KV-33KV

Type	Rated Voltage (kV)	Rated Current (A)	Breaking Current (A)	BIL (kV)	Power Frequency Withstand Voltage(kV)	Leakage Distance (mm)	Weight (kg)	Packing Dimensions L×W×H (CM)
WSC-48B	24	100	6000	150	65	650	5.5	39*35*11
WSC-48B	24	200	8000	150	65	650	5.5	



30KV-33KV

Type	Rated Voltage (kV)	Rated Current (A)	Breaking Current (A)	BIL (kV)	Power Frequency Withstand Voltage(kV)	Leakage Distance (mm)	Weight (kg)	Packing Dimensions L×W×H (CM)
WSC-46	33	100	6000	170	70	680	5.3	60*35.5*12
WSC-46	33	200	8000	170	70	680	5.3	



36KV-38KV

Type	Rated Voltage (kV)	Rated Current (A)	Breaking Current (A)	BIL (kV)	Power Frequency Withstand Voltage(kV)	Leakage Distance (mm)	Weight (kg)	Packing Dimensions L×W×H (CM)
WSC-47	36	100	6000	180	75	820	6.0	66*35.5*12
WSC-47	36	200	8000	180	75	820	6.0	

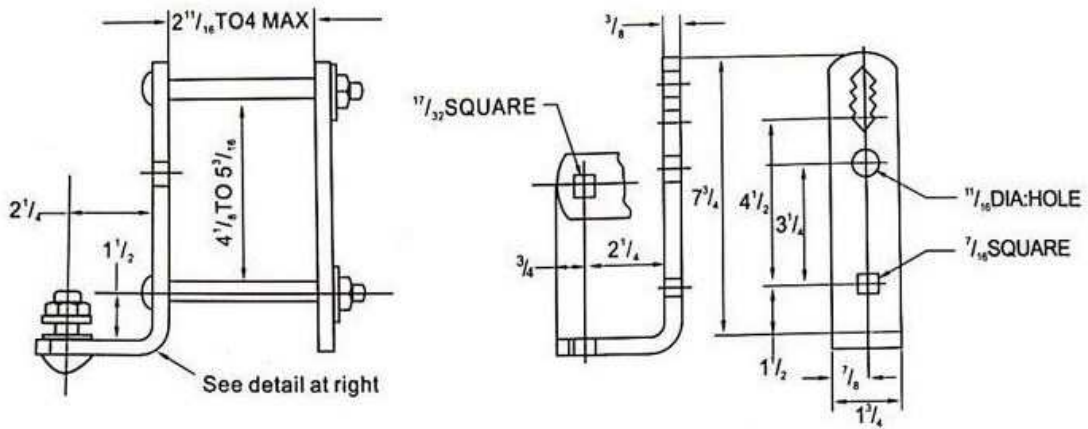


36KV-38KV

Type	Rated Voltage (kV)	Rated Current (A)	Breaking Current (A)	BIL (kV)	Power Frequency Withstand Voltage(kV)	Leakage Distance (mm)	Weight (kg)	Packing Dimensions L×W×H (CM)
WSC-50	36	100	6000	180	75	1020	6.3	66*35.5*12
WSC-50	36	200	8000	180	75	1020	6.3	



Mounting Bracket for Fuse Cutout



NEMA Type B Mounting Bracket-Adjustable for 3 " X4 " to 4 " X5 " Crossarm

